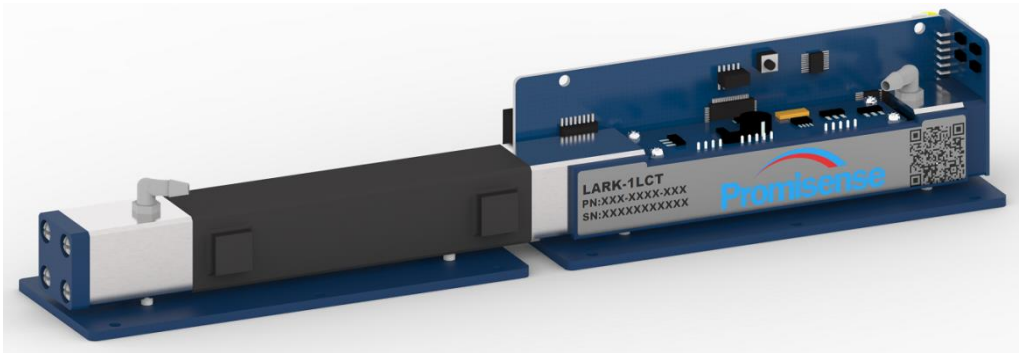


NDIR CHCl₃ SENSOR MODULE

LARK-1LMCT CHCl₃ 100PPM| Order NO.: 001-080H-101

DATASHEET



Parameters

Principle	NDIR
Range	0 ~ 100ppm CHCl ₃
Sampling Mode	Pumping
Response Time	≤ 10 s (@500 ml/min)
Recovery Time	≤ 10 s (@500 ml/min)
Long-term Stability*	TBD
Temperature	0 °C ~ 50 °C
Tolerance	±15 ppm @20 °C
Zero Temp. Drift	TBD
Resolution	< 2 ppm/sec
Reading Unit	ppb
Detection Limit	2 ppm

*Long-term Stability: 28 days of zero drift measured in clean air of 0~90% RH, 0~35 °C

Applications

- Environment monitoring

Merits

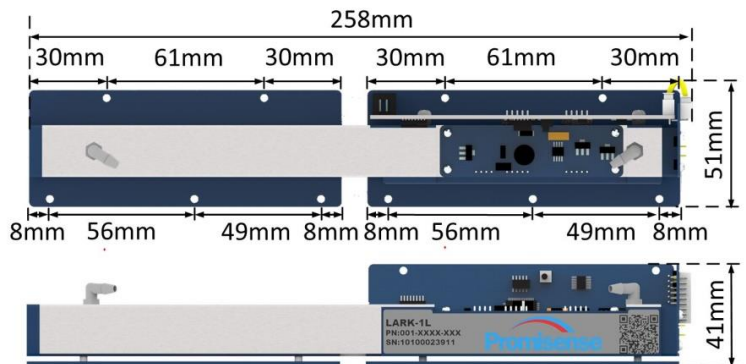
- High resolution
- Low detection limit
- Long life
- Low cross-sensitivity

Dimensions

- Length: 258 mm ± 1 mm
- Width: 51 mm ± 1 mm
- Height: 39 mm ± 1 mm
- Weight: 540 g ± 5 g
- Screw Hole Diameter: 3 mm

Mechanics

Optic Cell	Steel
Circuit Board	FR4 / Lead-free HASL
Solder	Sn / Ag / Cu
Mounting Plate	ABS



DATASHEET

Electrical Parameters

Input Voltage	9 ~ 24 VDC (#9 pin)
Operating Current	< 0.15 A @9 VDC
Operation Power	< 1 W for Average < 1.5 W @ Peak
Heating Power	<8W @ 5VDC
Warm-up Time	3 minutes (Tolerance ± 30 ppm) 60 minutes (Tolerance ± 15 ppm)
Output Voltage	0.4 ~ 2.0 VDC (#2 pin) (0.3 ~ 0.4 V for Negative Reading)
Warranty	18 months*

Application Condition

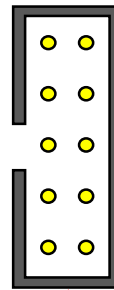
Prefer Condition	Room Temperature, Dry, Clean
Safety	None Explosion-proof Design
Temperature	0 °C ~ 50 °C
Humidity	0% RH ~ 50% RH (No Condensation)
Flow Rate	300 ~ 800 ml/min
Pressure	0.5 ~ 2.0 ATM (Ambient air pressure measured, without pressure compensation)

*Non-warranty Case:

- Polluted by condensation, water or dust; Dust and water removing is strongly suggested;
- Damaged by falling, hitting, disassembling, etching or over-loading;
- Label has been torn.

We reserves the right to modify this datasheet and will optimize the product in the future. If you use this product for specific application, please contact us for more technical support.

Connector Definition



1.ALM	2.V _{out} (DAC)
3.RXD(TTL)	4.TXD(TTL)
5.RXD(RS232)	6.TXD(RS232)
7.CS1*	8.GND
9.PWR DC	10.GND



*CS1: 0~3.3 VDC Output, for RS485 convertor

Accessories

Tygon Tube

- Length 50 mm × 2
- Diameter 3.2 mm × 6.4 mm
- Polyethylene, Transparent

Ribbon Cable

- Length 400 mm × 1
- 10-pin, 28 AWG, Gray
- Female Connector, 2 × 5
- 2.54 mm Pitch