

## Application

- Connect LARK-1 with Power Supply
- Communicate with LARK-1 by USB-RS232 Converter
- Provide Air Exhaust Using a Pump (THOMAS PN: 3003-0507)

## Parameters

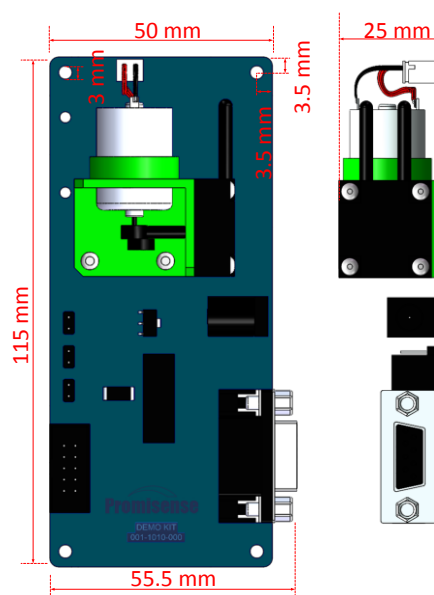
Input Voltage	10.8 ~ 13.2 VDC
Operating Current	< 150 mA
Communication	RS232
Temperature	0 ~ 40 °C

## Mechanics

Circuit Board	FR4
---------------	-----

## Dimensions

- L \* W \* H: 115×50×25 mm
- Screw Hole Diameter: 3 mm



## Connector Definition

J1: DB9 , Female

1. NC	2. TXD (RS232)
3. RXD (RS232)	4. NC
5. GND	6 ~ 9. NC

J2: Power Jack

+9 ~ 24 VDC

J3: 2\*5 Header, 2.54mm  
(Connected to LARK-1)

1. NC	2. V <sub>out</sub> (DAC)
3. RXD(TTL)	4. TXD(TTL)
5. RXD(RS232)	6. RXD(RS232)
7. CS1	8. GND
9. PWR DC	10. GND

J4、 J5、 J7 (Flow Rate Controlling)\*

Short J4: 500mL/min

Short J5: 360mL/min

Short J7: 210mL/min

(\*One of J4&J5&J7 Should be Shorted)

## ◆ Dimensional Drawings

